

## AIR Importer

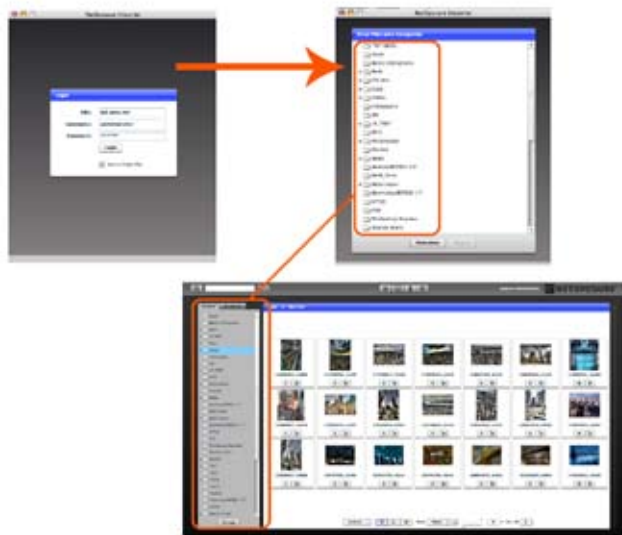
The NetXposure AIR Importer is a tool built with Adobe AIR technology that provides a desktop-like drag-n-drop experience for bulk importing of files into the NETXPOSURE 5 repository.

### ADOBE AIR TECHNOLOGY

Adobe AIR technology is a cross-operating system runtime environment that enables Rich Internet Applications (RIAs) like NETXPOSURE 5 to deploy like desktop applications for certain functions.

### HOW IT WORKS

Once installed, the AIR Importer is accessed like any other desktop application in both Windows and Macintosh environments. A pop up window will display for entering login credentials to the DAM. These user credentials are filtered through all the appropriate permission settings inherent in the DAM.



Once the user is properly logged into the system they will be presented with a folder structure in the pop up window that mirrors the file structure on the server. They are now able to highlight files on their desktop and drag-n-drop them into the appropriate categories within the DAM via the AIR Importer. As files are ingesting a progress bar will appear tracking the assets as they are imported. With a direct connection to the server the system will begin to ingest the files much more quickly than if the same files were imported through the standard import function in the DAM user interface where they are subject to more bandwidth constraints of the Web.

### METADATA

A button on the AIR Importer pop up window is labeled "Metadata". Users can select this before importing assets to access all metadata fields associated with the assets in the DAM. Selecting the metadata fields and filling in appropriate information before the drag-n-drop will enable users to write new metadata to all assets being imported at the time of drag-n-drop from the desktop.

### HOW IT WORKS

Once installed, the AIR Importer is accessed like any other desktop application in both Windows and Macintosh environments. A pop up window will display for entering login credentials to the DAM. These user credentials are filtered through all the appropriate permission settings inherent in the DAM.

### FOLDER STRUCTURES

The AIR Importer is able to ingest entire folder structures of files from the desktop. Once a folder is dragged into the existing structure via the AIR Importer, the system will create a new category in the DAM and with the name of the folder. A similar folder will be created in the file structure on the server to mirror this newly created category.

### BENEFITS OF THE AIR IMPORTER

- **Import Speed:** A direct connection to the server from the desktop allows the system to ingest files much more quickly than if imported through the standard import function in the DAM user interface where the imported files are subject to more bandwidth constraints of the Web.
- **Streamlined Workflow:** Drag-n-drop importing from the desktop takes a critically time consuming step out of the DAM import process.
- **Efficient Handling of Taxonomy:** The ability to add metadata at the point of drag-n-drop import saves the time required to manually add it from the DAM interface -- a critical step often skipped by DAM users because it is too cumbersome.

### REQUIREMENTS

To install the AIR Importer the AIR Runtime must first be downloaded (for free) and installed from the Adobe website. The AIR Importer will only run on the Windows and Macintosh platforms.

Support for the AIR Importer on Linux will be available shortly after Adobe officially releases AIR for Linux. Next, users must install the AIR Importer, available for download from the NetXposure Support Portal. For more detailed information consult the NetXposure AIR Importer Install Guide.